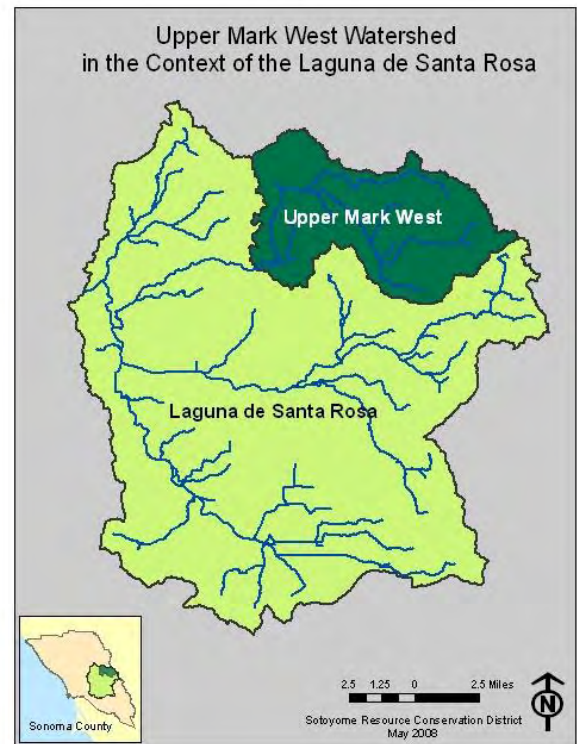


The Upper Mark West Watershed Management Plan

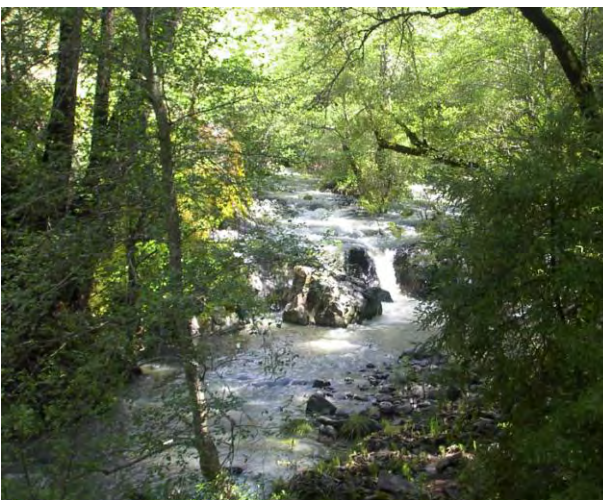
The Sotoyome Resource Conservation District (SRCD) has begun development of the Upper Mark West Watershed Management Plan. The plan will be a valuable tool stakeholders can use to make management decisions in the watershed. This plan will be designed to facilitate stewardship planning at many different scales, from the parcel scale to the watershed scale. SRCD will work with stakeholders throughout the planning process to ensure that the plan serves the needs of the many parties involved.

The plan will pull together existing information from many different sources, including, federal, state and local government agencies, as well as landowners and landowner/watershed groups to provide a description of present and historic conditions in the watershed. The plan will build upon sediment source assessments completed by Pacific Watershed Associates. SRCD will also develop new data sets including roads and other non-point sediment sources using Geographic Information System (GIS) technology and on-the-ground investigation. Finally, in addition to data compiled through SRCD's Monitoring and Assessment Program, SRCD will collect additional data on water quality, flow and geomorphology.



This information will be used to characterize the watershed and identify achievable stewardship objectives. The plan will address the following preliminary goals:

- Meet water quality standards for sediment/siltation
- Support designated uses for aquatic life
- Restore aquatic habitat
- Assess, protect and enhance riparian habitat
- Promote native biodiversity in upland habitats
- Restore and protect forest health
- Improve water conservation



The plan will address each of these goals through recommended best management practices (BMPs), as well as education and outreach activities to promote these BMPs. The final product will be a plan that will act as a roadmap that can be used by landowners, stakeholder groups, and partner agencies such as SRCD to guide future stewardship activities in Upper Mark West watershed.

Feedback from landowners and other stakeholders will be important in developing this plan. If you have any questions or comments about the goals or structure of the plan, please contact Valerie Sherron at Sotoyome Resource Conservation District, 707-569-1448 x 102, or VSherron@SotoyomeRCD.org.

Preliminary Outline for the Upper Mark West Watershed Management Plan
Based on the EPA's "Handbook for Developing Watershed Plans to Restore and Protect our Waters"



Section I: Introduction

- Purpose of Upper Mark West Watershed Management Plan
- Process for Developing the Plan
- Organization of the Plan
- Watershed Goals
- Previous Water Quality Efforts
- Stakeholder Groups
- Education and Community Outreach

Section II: Inventory of the Watershed

- Introduction
- Geographic Description and Context
- Demographics & Economics
- Land Uses – Current and Historic
- Cultural Resources
- Geology and Topography
- Soils
- Precipitation and Climate
- Surface Water Resources
- Groundwater Resources
- Threatened and Endangered Species
- Salmonids
- Wildlife
- Recreation

Section III: Water Quality Data

- Designated Uses for Surface Water
- Aquatic Life Habitat
- Water Supply
- Recreation
- Potential Pollutant Sources
- Overview of Water Quality Impairments

Section IV: Water Quality Issues

- Major Water Quality Issues
- Sedimentation and Loss of Riparian Area

Section V: Sediment Budget and Load Reductions

- Analysis of Current Sediment Loading
- Target Load Reductions

Section VI: Recommended Land Management Practices

- Erosion Control
- Aquatic Habitat Restoration and Enhancement
- Upland Biodiversity
- Forest Health Restoration and Protection
- Water Conservation Measures

Section VII: Education and Community Outreach

Section VIII: Action Plan to Improve Natural Resources Sustainability

- Goals
- Actions
- Project Steps
- Timelines
- Responsible Parties
- Budgets

Section XI: Follow-up Monitoring & Indicators

- Monitoring Plan
- Indicators